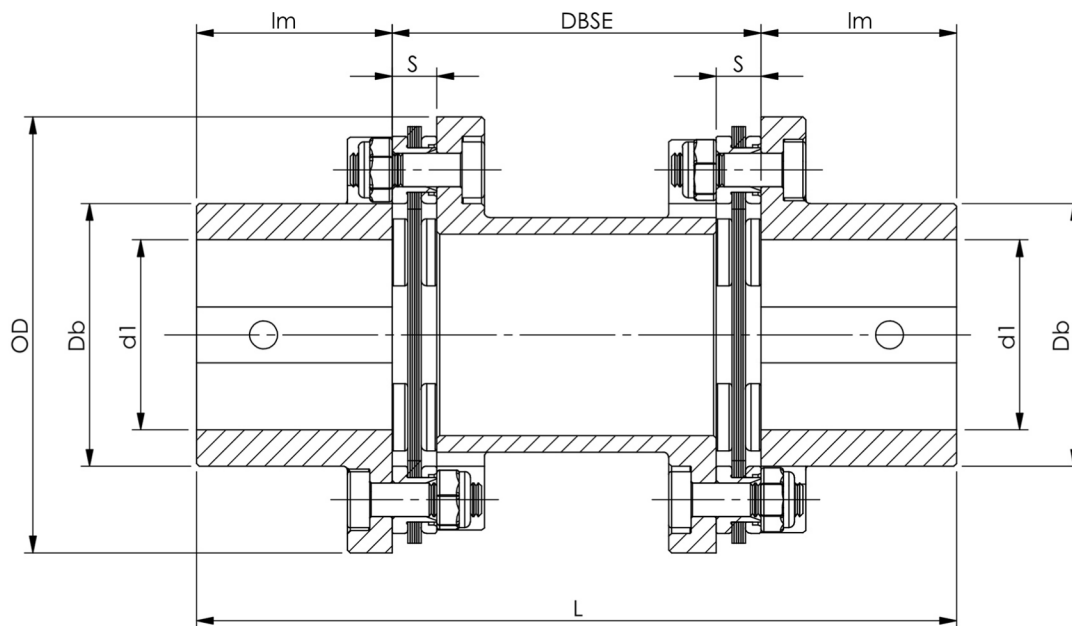


# Giunti Lamellari LMD

ATEX, 8 FORI



Taglia	Coppia Nom.	Potenza	Giri massimi	Mozzo S	OD	Db	L	Im	DBSE	S	Peso	Momento d'inerzia
	Nm	kW/rpm	giri/min	foro max d1								
LMD2100	20400	2,136	6000	140	325	200	590	180	230	32	117	1,0819
LMD2600	25600	2,681	6000	160	356	225	600	180	240	34	149	1,6779
LMD3700	37000	3,874	5500	178	389	250	660	180	300	37	179	2,6087
LMD5200	52000	5,445	5000	198	420	278	690	190	310	37	235	4,1344
LMD6800	65700	6,880	4500	205	454	290	730	200	330	42	290	5,8727
LMD9000	83000	8,691	4000	228	470	320	790	220	350	42	348	8,3249
LMD11000	105000	10,995	4000	255	520	360	830	230	370	42	465	12,7390
LMD15000	135000	14,136	3600	285	570	400	890	250	390	46	573	18,7442
LMD18000	167000	17,487	3400	335	642	475	960	270	420	46	677	26,5166
LMD22000	210000	21,990	3100	345	665	485	990	280	430	50	764	31,5044
LMD26000	259000	27,120	2900	375	720	530	1020	290	440	50	837	35,8097
LMD32000	310000	32,461	2700	430	820	610	1130	340	450	58	961	44,8622